

VISION MAT AFP

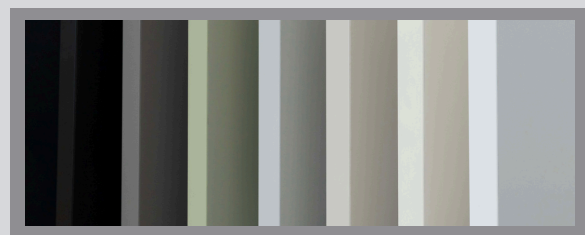
TECHNICAL DATA

Dimensions: 2800 x 1300 mm

Thickness: 18mm (PP)

Base: MDF, chipboard on request

On request: 6 - 48 mm



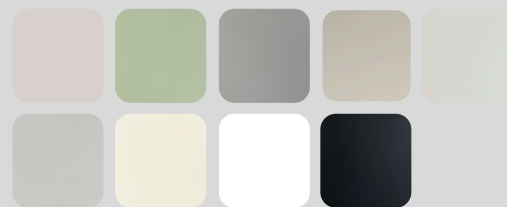
Furniture boards covered with a thin PET laminate with hydrophobic properties in a delicate satin finish are a modern solution that is becoming increasingly popular in the furniture industry.

TECHNICAL INFORMATION

PET laminate is a material that is characterized by:

- exceptional durability,
- resistance to mechanical damage,
- easy to keep clean.

The hydrophobic properties of PET laminate make it easier to keep the surface clean than with standard matte boards, especially in rooms such as kitchens or bathrooms. Thanks to this, furniture made of these boards combines unique elegance and usability.



VISION METALLIC / MAT AFP

Protection foil
PET laminate
Substrate board
Laminate PP

